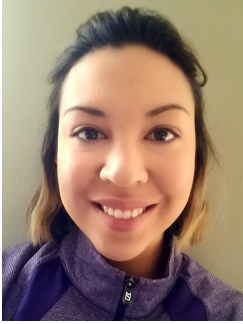


VIRTUAL APPOINTMENT GUIDELINES

The following photos are needed:



1. Portrait photo smiling
2. Front view close up (hold the camera horizontal)
3. Right side view close up (hold the camera horizontal, slightly towards the front of your face, with the lens angled to the back of your teeth)
4. Left side view close up (hold the camera horizontal, slightly towards the front of your face, with the lens angled to the back of your teeth)

*When taking the photos, have the camera parallel to the teeth and the flash ON.

*If your photos do not appear well lit and clear (in focus), please retake them, so that Dr. Arbit will have good information from which to give you advice.

WHAT WE NEED

HOW IT'S DONE



- For patients wearing aligners we will also need:**
5. Closeup of front teeth **slightly apart** with aligners
 6. Closeup of front teeth **slightly apart** without aligners

